




PREVISICO



airmic

Reduce flood impacts by more than 50% for
people and organisations worldwide



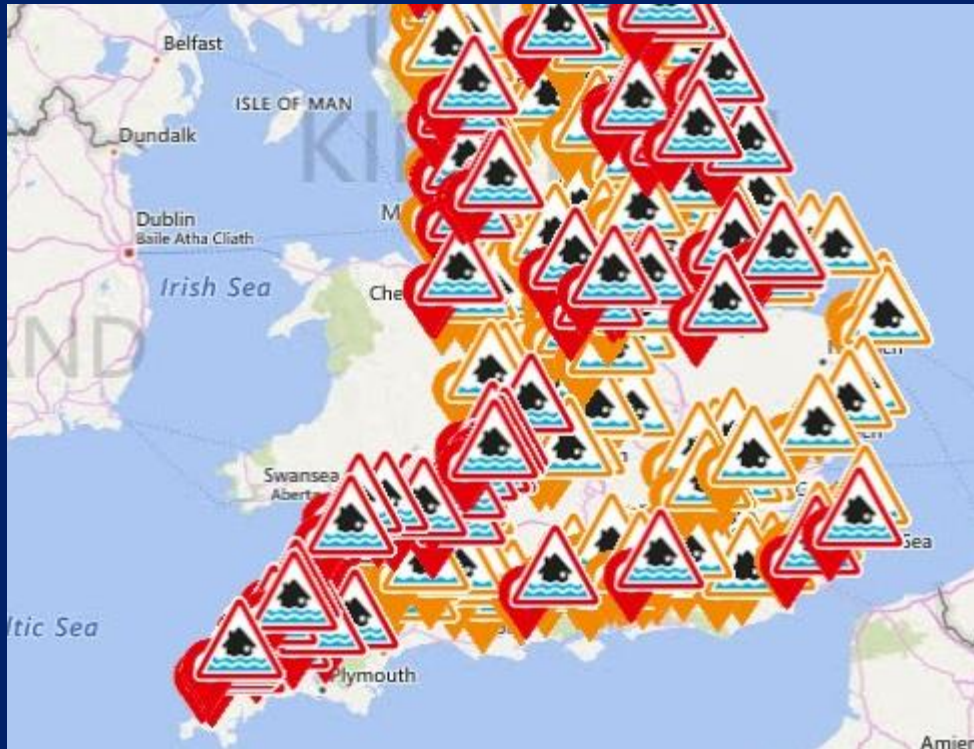
\$500bn p.a. of
global property
losses by
2030

What's the problem?

Current systems do not provide surface water warnings

Rivers and the sea

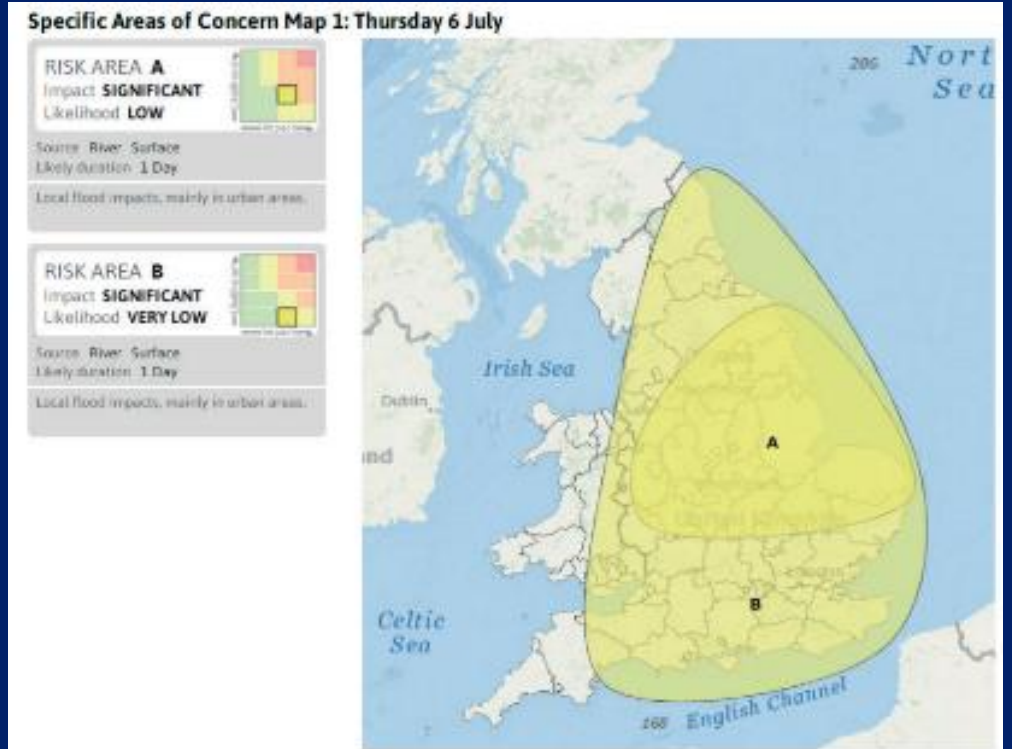
- 2.6m properties at risk



Source: EA, 2015

Surface Water

- 3.2m properties in at risk



What do we do?

Underpinned by 20 years of R&D and trusted by the Cabinet Office

Real-time simulations



Up to 48 hours ahead



25m resolution



Depth and time



Globally scalable



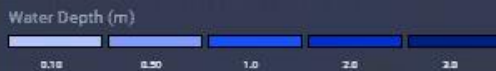
Find an address...

PREVISICO INTERNAL DEMO VERSION

Previsico Surface Water District Alerts

66 Districts at risk over next 48 hours

Previsico Surface Water Flood 48-hour outlook



Rainfall Forecast (48-hour outlook)

Hillshade View

Environment Agency Alerts

Natural Resources Wales Alerts

SEPA Flood Alerts

Environment Agency Alerts Area

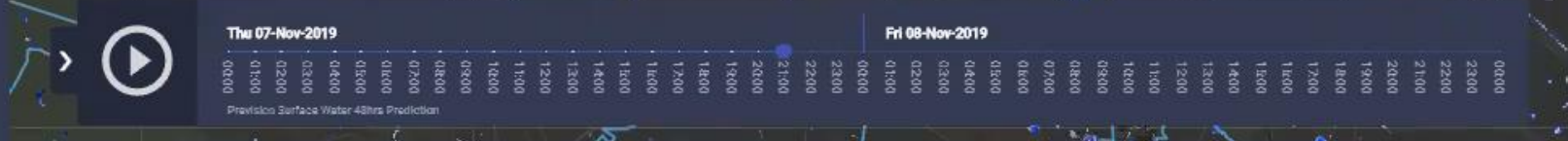
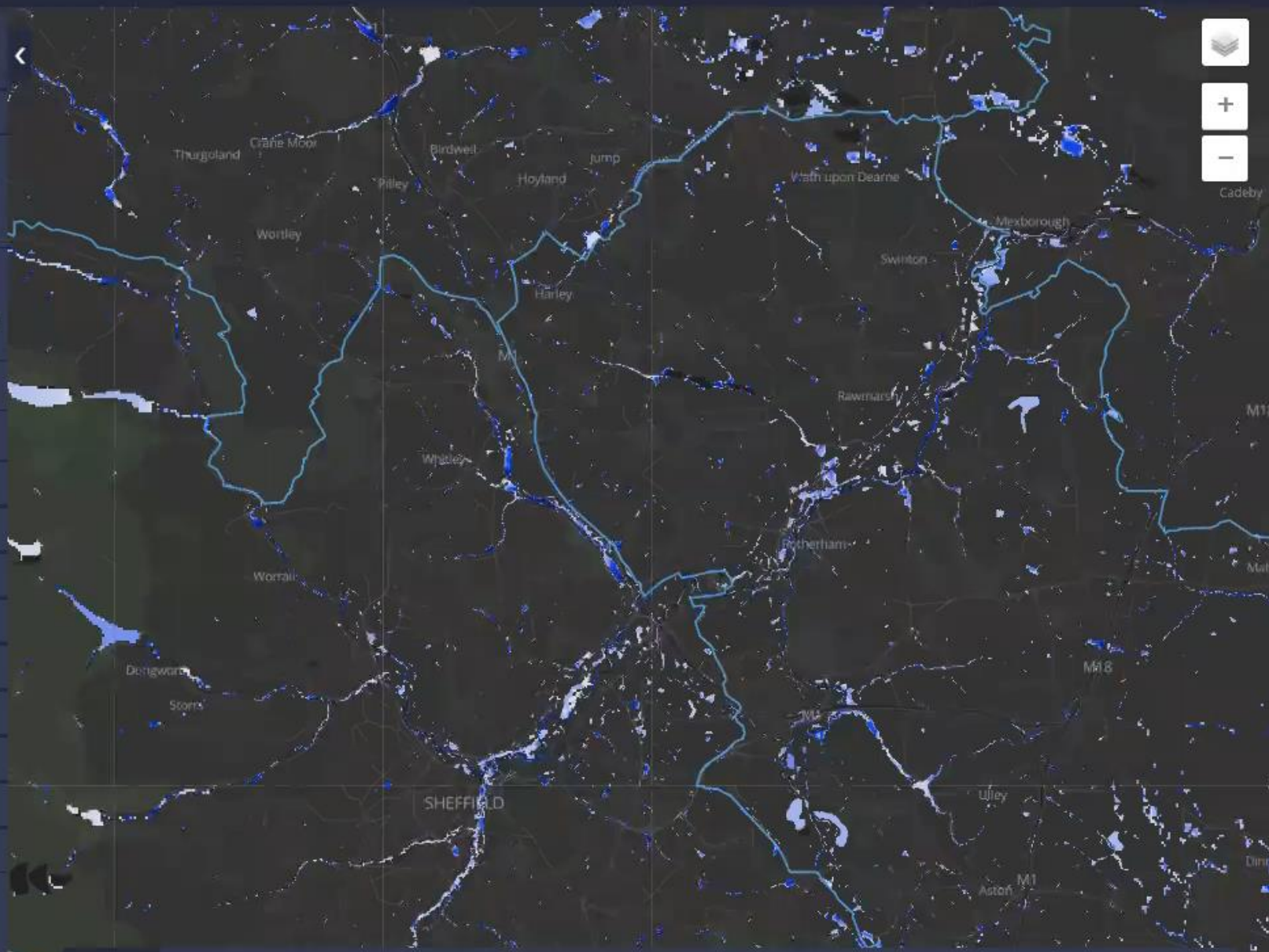
Environment Agency Live Hydrology

My Data Layers

Social Media

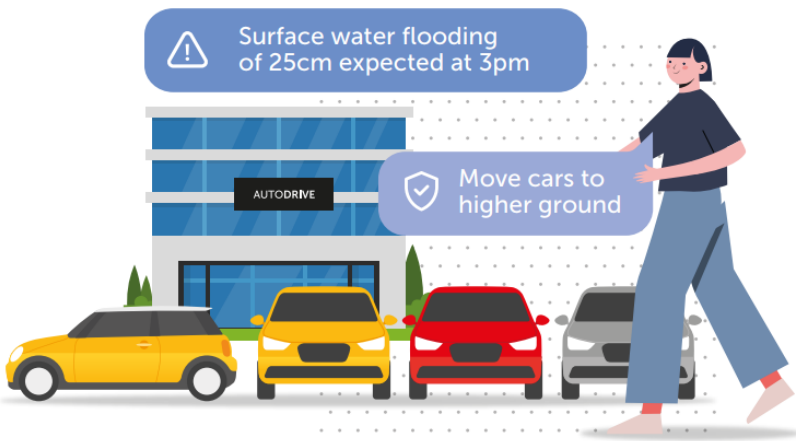
My Assets

My Asset Alerts



Use cases

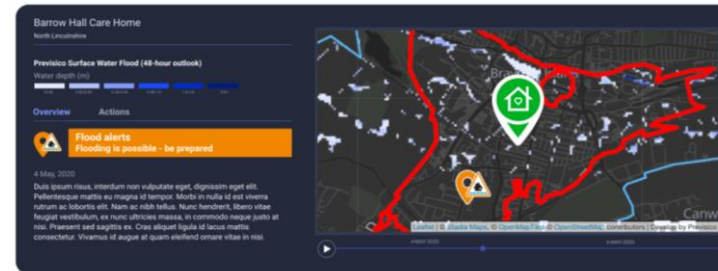
Loss mitigation



 Erect defences and save stock

 Reduce BI

Risk intelligence



 Visualise all assets at risk

 Understand exposure

Flood response



 Identify hotspots

 Mobilise operations